

“The DockSider”™

Patented

Assembly, Installation, Setup, and Operating Instruction

OM CR 200 - 80821



- Canoe Rack Clamp On Model; Series 200 -

- Holds Canoes up to 100 pounds.
- For Docks with Wood, Composite Wood, Vinyl, and Aluminum Decking.
- Must have Dock side boards less than 7 ½ inches. Truss Docks 10 inches.
- Designed for standard dock decking thickness of up to 1 ½ inches.
- The underside of your dock Must be accessible.

**Some
Assembly
Required**

A Canoe Lift and Dock Storage Rack

Model CR 200 - Clamp On Mount

- Holds your Canoe 5 to 17 inches below the dock surface.
- Includes a Pulley System which reduces the Pull required to Lift
- Accommodates Freeboard (Dock Surface to Water Level) height up to 36 inches.

Please read these instructions carefully before using this product and save this manual for future use.

For assistance, please call: 585 – 734 – 7374
Or send email to: info@DockCraft.com

**DockCraft Industries LLC
3694 Nibawauka Beach
Canandaigua, New York 14424**

Table of Contents

	Page
“The DockSider”™	
○ Safeguards	2
○ Warranty	3
○ Part List	3
○ Assembly Instructions	4
○ Clamp On Mount Dock Configuration Guide	7
○ Installation – CR 200	9
○ Setup	10
○ Operation	13

IMPORTANT SAFEGUARDS

1. READ ALL INSTRUCTIONS BEFORE USING THE “The DockSider”™.
2. The intended use of the product is to store a Canoe on the side of a boat dock. Do not use this product for other than its intended use.
3. The maximum weight of Canoe to be racked in “The DockSider”™ shall not exceed 100 pounds.
4. “The DockSider”™ Stainless Steel Model is best for Salt Water applications.
5. Canoes should not contain more than one quarter inch (1/4”) of water inside when storing in the “The DockSider”™. Product Damage could result to the “The DockSider”™, if this is not followed the Warranty will be voided. If your Canoe contains excess amounts of water (capsized or other), roll canoe over to empty.
6. To ensure proper use, do not attempt to modify this product in any manner. Please refer to the manual if questions arise.
7. If further assistance is needed, please contact DockCraft Industries prior to use.
8. Do not allow children or adults to lean on, play on, around, or with the “The DockSider”™ while a Canoe is loaded or unloaded. Serious injury or damage to product, docks, and people could result if this warning is not followed.
9. Store only one Canoe in “The DockSider”™.
10. If the DockSider is not working properly, please contact DockCraft Industries immediately for assistance.
11. Do not enter or exit your Canoe when your Canoe is engaged within “The DockSider” ; in the loading or storage position.
12. Do not install your Canoe Storage Rack such that “The DockSider” is near or in contact with any electrical or Dock Structural components.

Limited Warranty

What does your warranty cover?

- Any defect in materials or workmanship when used for the intended purpose of storing kayaks on the side of a boat dock under normal use and conditions.
- The warranty is limited to the original purchaser.

For how long after the original purchase?

- One year

What will we do?

- Provide you with a replacement part at no charge for any part found defective in materials or workmanship.

How do you make a warranty claim?

- Please contact DockCraft Industries for a Return Material Authorization (RMA) number before returning items. A shipping address will be provided at that time.

What does your warranty not cover?

- Damage from failures that occur as a result of improper assembly, failure to properly adjust and operate, misuse or neglect of product's intended purpose.
- Product which has been modified in any manner.
- Safeguards are not followed
- The warranty is not valid if you are not the original purchaser.
- Cosmetic defects

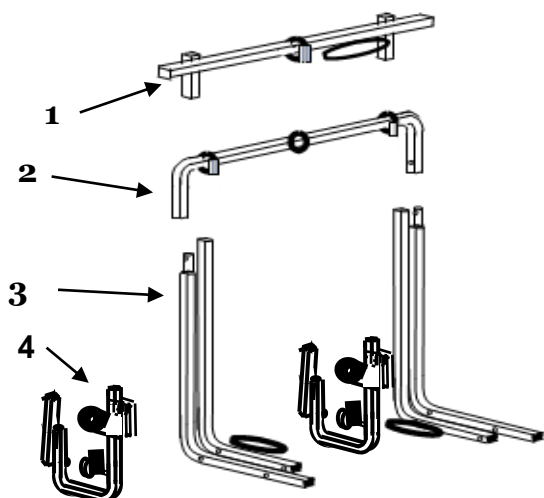
“The DockSider”™ PARTS LIST – Canoe Lift & Storage Rack; Series 200

Remove all parts from the box and remove the dock mount from the pivot lateral by unwrapping the stretch wrap.

If any parts are missing from the package (in type or quantity), do not assemble and contact DockCraft Industries immediately.

Model CR200 –

Parts Diagram



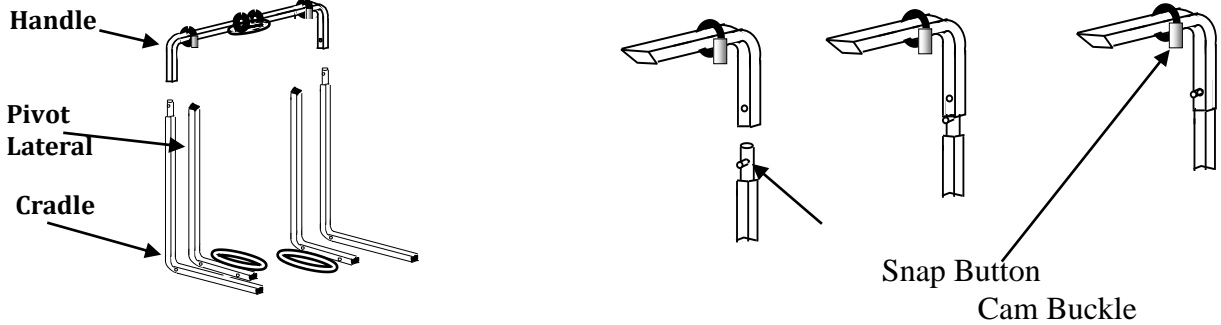
- 1 – Canoe Lifting Assembly**
- 2 - Handle Assembly (1)**
- 3 - Pivot Lateral Cradle Assembly (2)**
- 4 – Clamp On Dock Mount Assembly (2)**

Assembly Instructions

Attach Cradle Handle :

- 1 - Position Handle over Cradle.
- 2 - Slide the Handle over extension on Cradle.
- 3 - Depress Snap Button on Cradle.
- 4 - Seat Handle until Snap Button pops through the Handle hole.
- 5 - Repeat process for the other side Cradle.

Steps 1 - 4



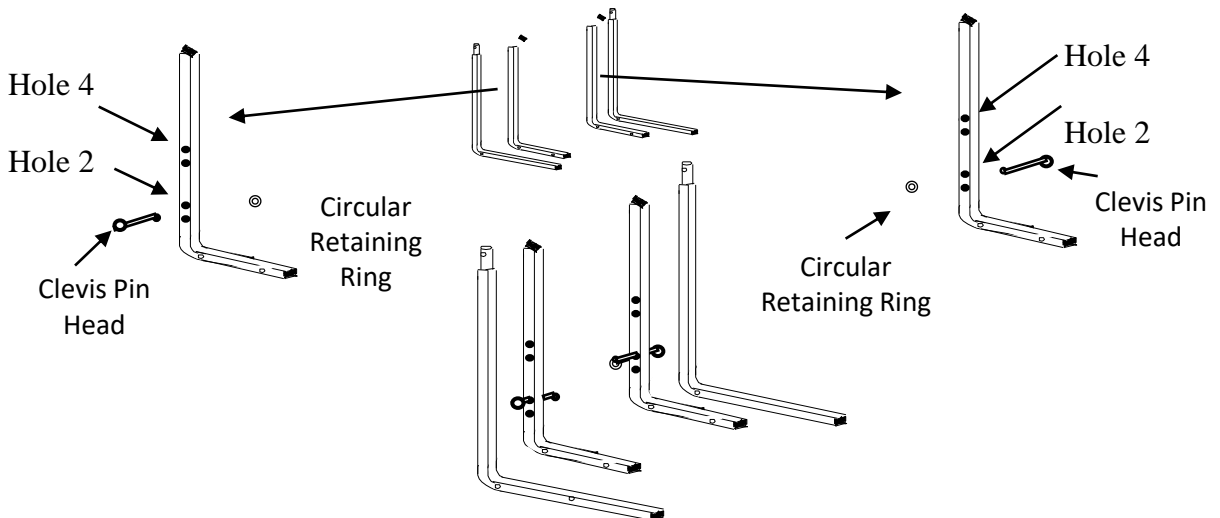
Dockside Rack

Waterside Rack

- Notes -** Lifting Straps are on the inside
Canoe Rack – Shorter Legs on the inside

Insert Clevis Pins and Retaining Rings on Pivot Lateral:

- 6 – If the Water Level is 10 to 25 inches below your Dock Decking -
Insert Clevis Pin through Hole 2 in Pivot Lateral such that the head is between the Pivot Lateral and Cradle, attach circular retaining ring through the hole in the end of the clevis pin.
- 7 – If the Water Level is 25 inches or greater from the Dock Decking –
Insert Clevis Pin through Hole 4 in Pivot Lateral such that the head is between the Pivot Lateral and Cradle, attach circular retaining ring through the hole in the end of the clevis pin.

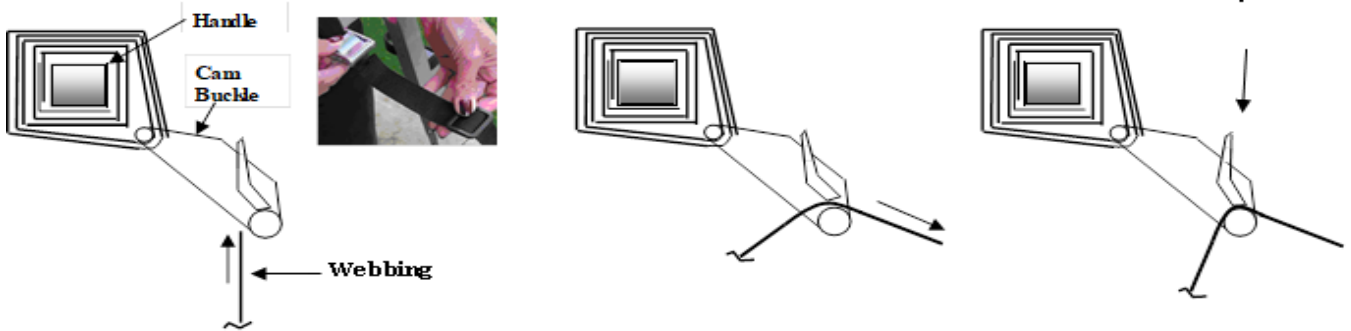


Assembly Instructions - continued

Thread Webbing through Cam Buckle :

- 8 – Obtain one of the Cam Buckles and Depress Lever
- 9 – Thread Webbing through opening in the Cam Buckle
Ensure that the Single Bar on the Web Keeper is positioned as shown.
- 10 – Pull webbing through the Cam Buckle until the pre-marked line is in position with the cam buckle.
- 11 – Repeat Steps 6 – 8 to thread the webbing through the other Cam Buckle.

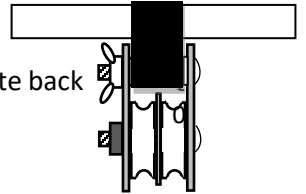
Steps 8 - 11



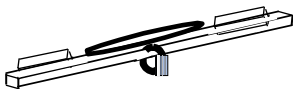
Assemble the Lifting Assembly to the Rack Assembly

Start by assembling the pulley to the webbing strap in the middle of the lifting assembly:

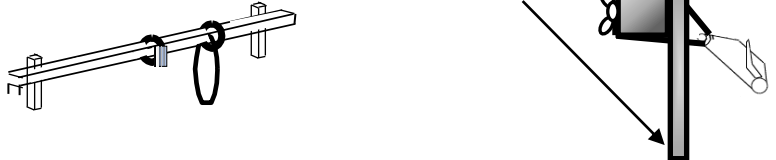
Remove the wing nut and push the screw so that it clears the side plate, Rotate the side plate such that the nylon spacer and screw is exposed. Slide the round spacer behind the webbing strap on the cross bar. Rotate the side plate back in position, push the screw through the hole and secure with the wing nut.



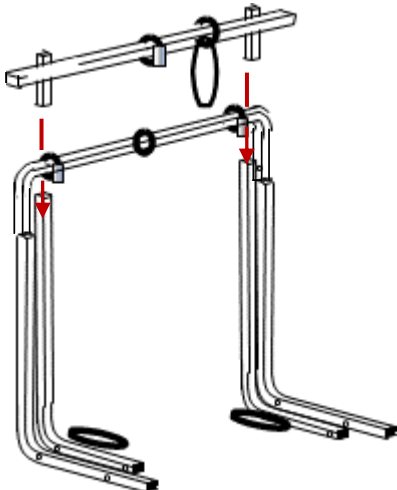
Remove mini wrap and rotate channels as shown



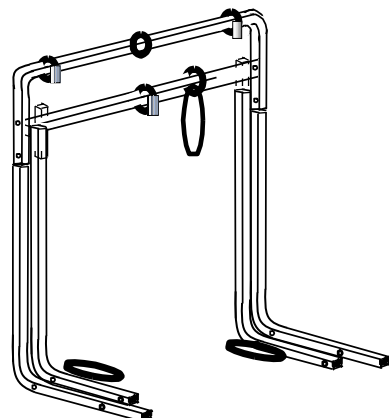
Snap buttons on this end



Align Lifting Assembly with Pivot Laterals, depress Snap Buttons and seat



Completed Assembly

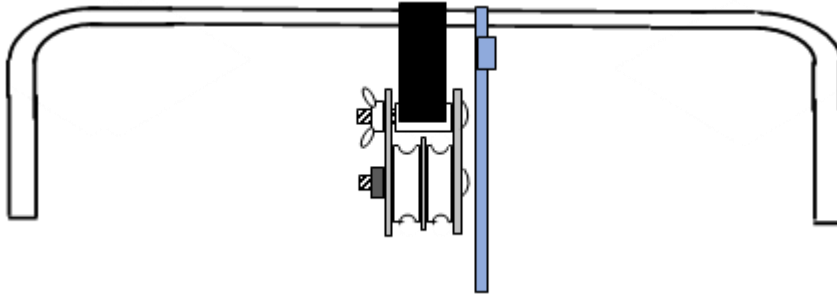


Assembly Instructions – continued

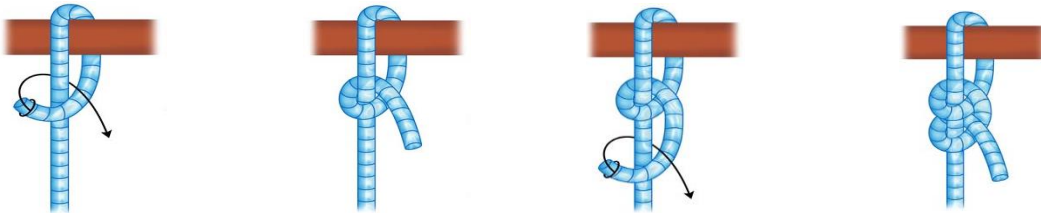
Attach the rope to the Pulley System. This Can be done now or after the unit is assembled to the dock.

Get the rope and tie two half knot next to the pulley assembly on the cradle handle.

The knot should be on the side of the pulley handle that has the head of the screw mounting the pulleys.



Tying two half hitches



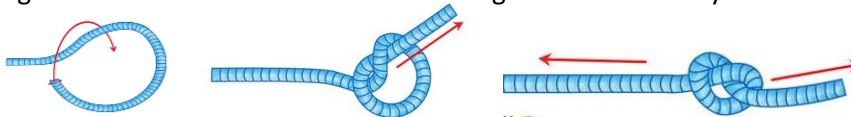
Wrap the rope
Around the cradle handle

Pass the end
Through the loop

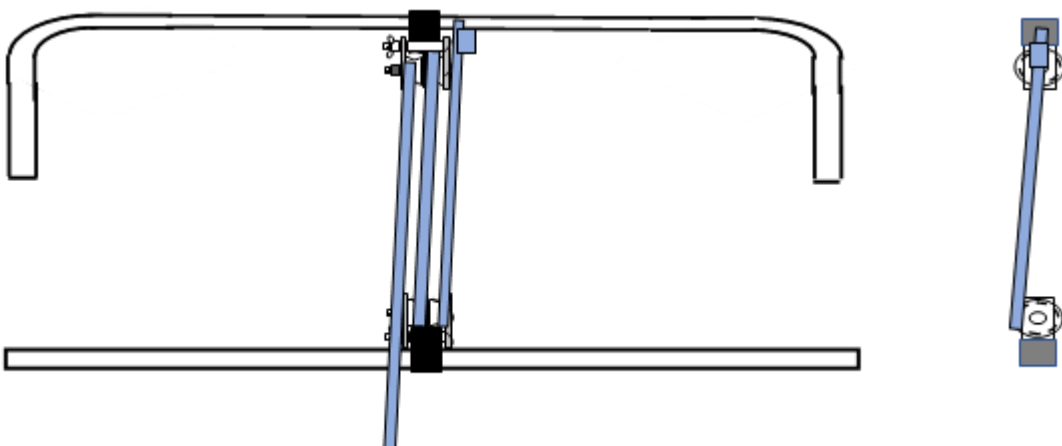
Wrap it around
the standing part

Tighten to
Complete

Tying a overhand knot on the loose end will give added security.



Thread the Pulleys

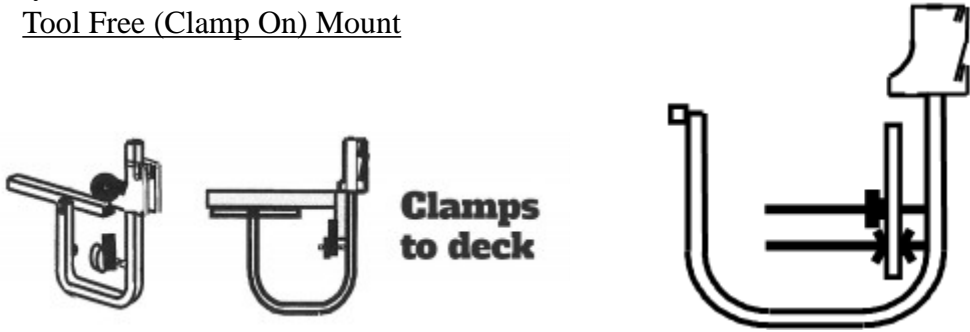


Slide knot next to pulleys, and thread Rope should be on top of pulley on Lifting Structure side,
When complete, coil the rope and secure it to the Lifting Structure with the Velcro strap.

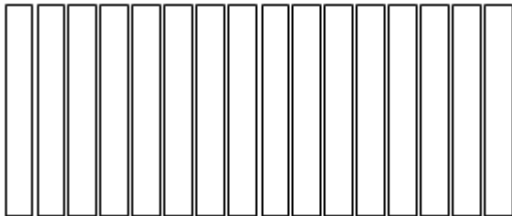


"The DockSider" Mounting Options
DockCraft Industries Tool Free (Clamp On) Mount for "The DockSider"
 - Kayak and Paddleboard Lift & Dock Storage Rack -

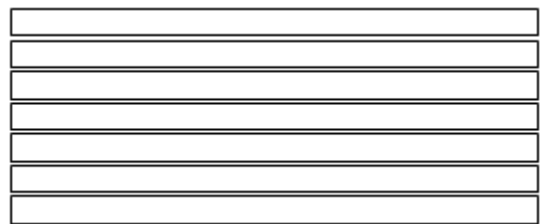
Kayak / Paddle Board Dock Rack
Tool Free (Clamp On) Mount



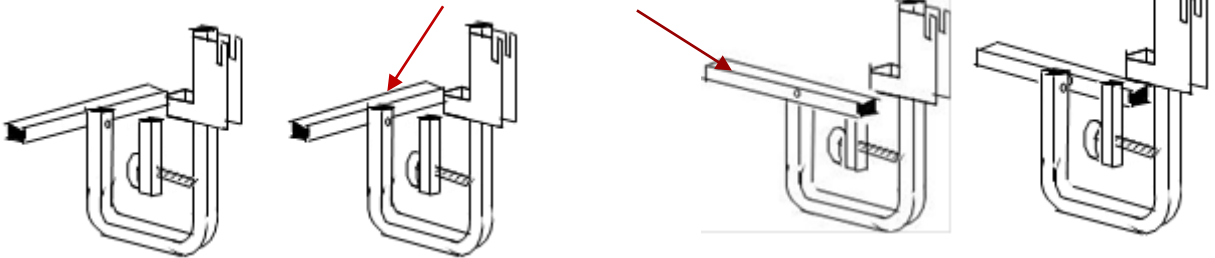
If the slats on your decking run across your Dock



If the slats on your dock run the length of your dock



Under Dock Bearing Tube



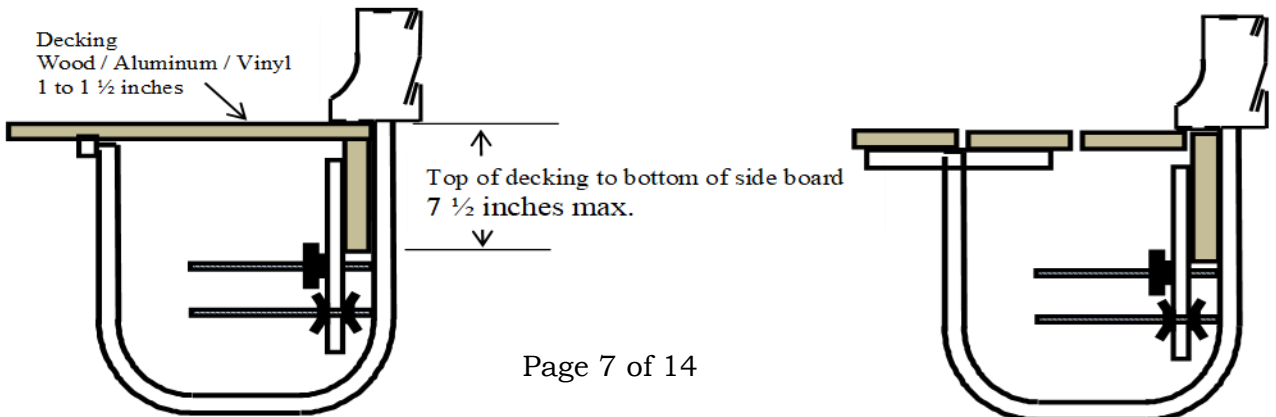
Align the under dock bearing tube as shown

Align the under dock bearing tubes on opposite sides of the mount

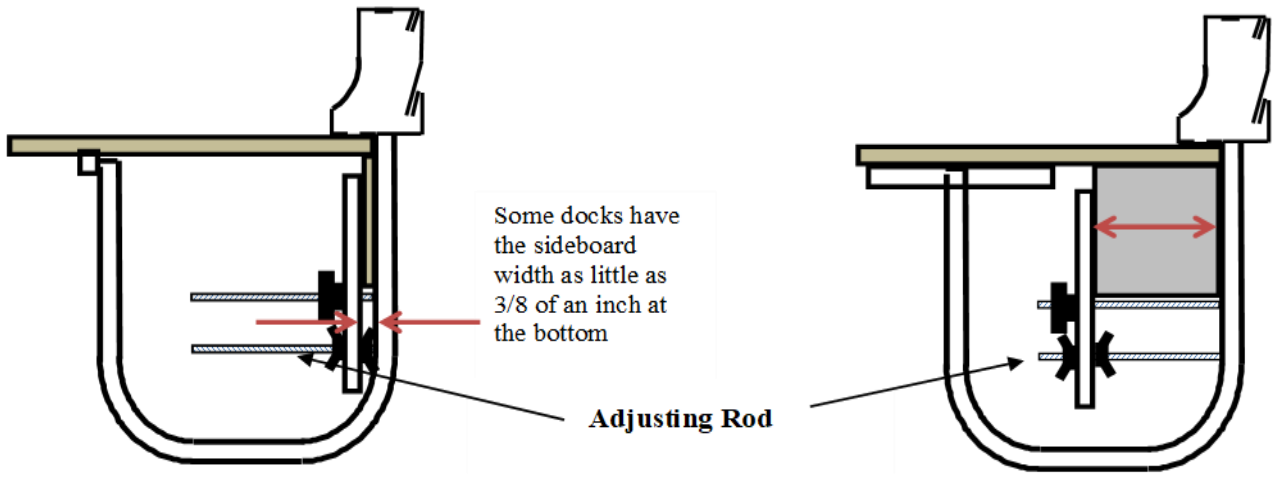
To align, undo the wing nut on the under dock bearing tube screw, remove the screw, and then align accordingly and insert the screw and tighten

Dock Configuration Guide

Docks with Aluminum / Vinyl / Wood Decking

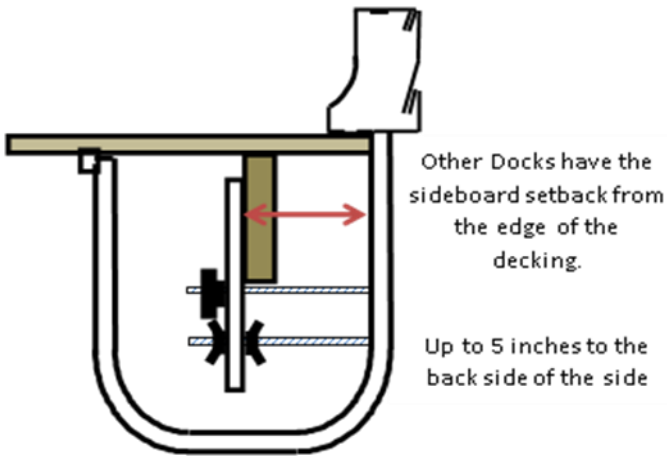


The Tool Free (Clamp On) mount is adjustable for the width and position of the dock side board



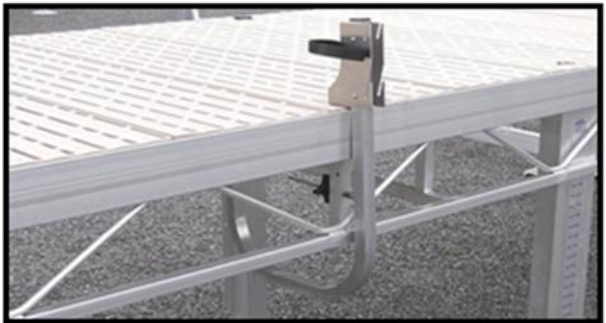
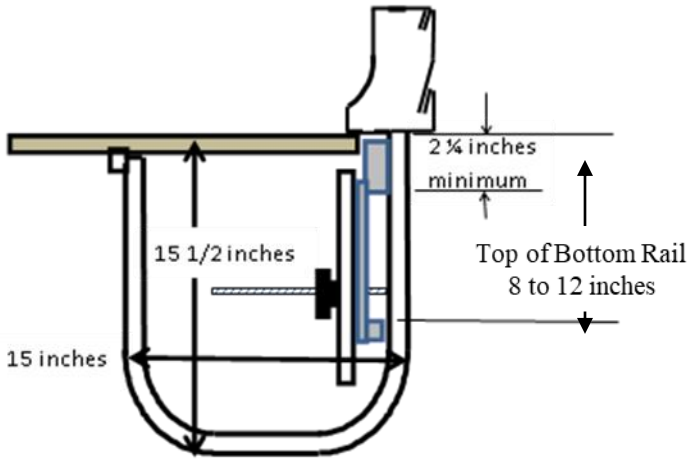
Some docks have the sideboard width as little as 3/8 of an inch at the bottom

Some docks have wide sideboards. Up to 5 inches is acceptable



Other Docks have the sideboard setback from the edge of the decking.
Up to 5 inches to the back side of the side

To adjust:
Assure the adjusting rod is seated then position the wing nut on the right such that it is in-line with the back of the sideboard.
Then tighten the clamp against the wing nut by tightening the wing nut on the left. To secure the clamp, tighten the hand knob until it is snug.

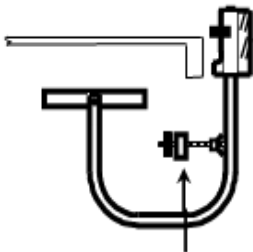


**If you have questions regarding your Dock
Please Contact us: info@DockCraft.com
(585) 734-7374**

Installation Procedure for Your - Series 200 Docksider

Series 200 – Tool Free Dock Mount Installation

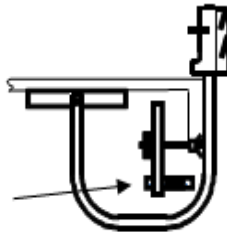
- 1 - Select a position on your dock where you choose to mount your Kayak Storage Rack. Ensure there are not any electrical or structural components in the area.
- 2 - The Docksider should be mounted on 1 section of your dock.
- 3 - Make sure the wood on your dock is solid (not cracked or rotting) at the installation position.
- 4 - Ensure there are no obstructions above or below your dock.
- 5 - Place one Dock Mount on your Dock and position as shown below
- 6 - Install



Rotate Dock Clamp to clear the sideboard of your dock

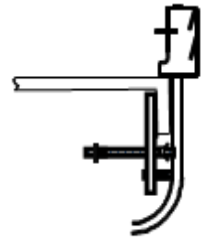
Position Dock Mount

For Truss type docks remove Adjustment Rod.



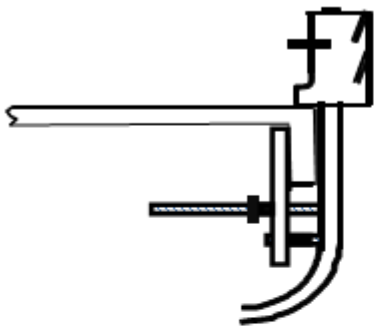
Lift Dock Mount Up and slide to the Left. Rotate Dock Clamp to vertical Position.

For Truss type docks - Lift up, pull out, twist dock mount to insert the dock clamp between diagonal supports, then straighten and slide to the left.



Pinch Dock Clamp against back side of Dock side board.

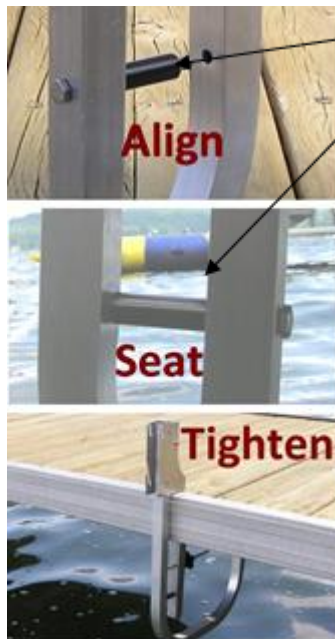
Assure that the extended screw is engaged in the hole on the back side of the vertical tube.



Tighten Hand Knob to secure Dock Mount.

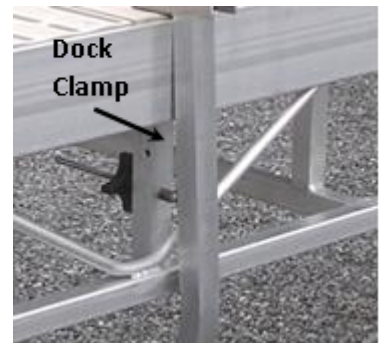
Push/pull top of Dock Mount ensuring little movement.

If needed, further tighten the hand knob.



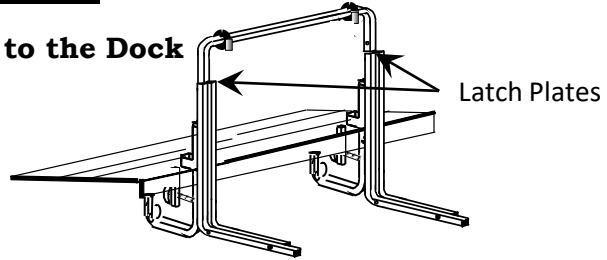
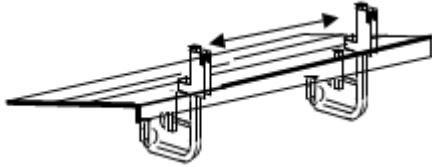
These parts were replaced with Adjustment Rod and wing nuts

Truss type dock with Dock Clamp oriented vertically.



Installation – Continued

7 - Mount the second Dock Mount to the Dock



Align the 2nd Dock Mount:
center to center distance

Canoe Unit – 26 ½ inches
Do not over tighten

Adjust the “loose” Dock Mount sideways as required to Engage the clevis pins on the Cradle Pivot Laterals (head of clevis pin on one side of the mounting bracket retaining ring on the other side) in the same slot of both Dock Mounts and seat.

Tighten the Hand Knob on the Dock Mount to secure.

SETUP of “The DockSider”™

Kayak Storage Rack to Water Level Adjustment:

If the distance to the water from the dock decking is:

10 to 22 inches: insert clevis pin in 2nd hole of the pivot lateral into the top Slot of the mounting bracket.

17 to 29 inches: insert clevis pin in 2nd hole of the pivot lateral into the bottom Slot of the mounting bracket

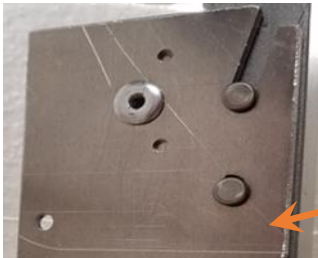
20 to 31 inches: insert clevis pin in the 4th hole of the pivot lateral into the top Slot of the mounting bracket

25 to 37 inches: insert clevis pin in 4th hole of the pivot lateral into the bottom Slot of the mounting bracket

Adjust if required - up or down - based on your specific watercraft or if your water level changes significantly throughout the season.

To “Lock” the Brackets and Pivot Laterals together insert “Locking Pin” on both sides of unit.

If Clevis Pin with Circular Retaining Ring in Hole 2 or 4 of Pivot Lateral is seated in the Top Slot.



Insert 2nd Clevis Pin through hole in bracket
and secure with
“R” Retaining Clip on opposite side.



If Clevis Pin with Circular Retaining Ring in Hole 2 or 4 of Pivot Lateral is seated in the Bottom Slot



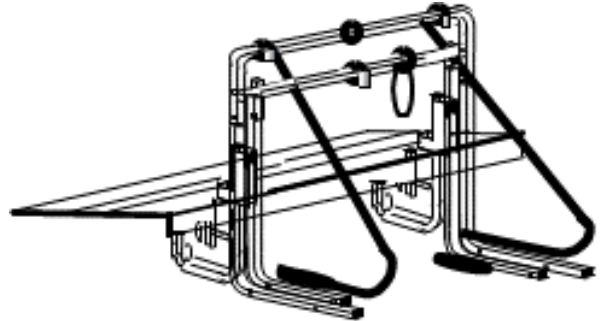
Insert 2nd Clevis Pin through hole in bracket
and secure with
“R” Retaining Clip on opposite side.



SETUP of "The DockSider"™

continued

9 – Rotate the Latch Plates to prevent the Cradle from rotating into the water.



CR 200

Tightly Wrap Safety Strap around Pivot Lateral and Dock Mount Rotate Latch Plates on lift Assembly side of unit.
Installation is Complete and you are now ready for the Final Adjustments

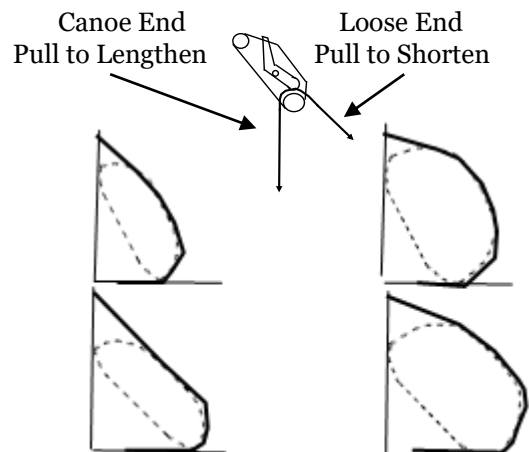
Webbing Length Adjustment :

As a result of the assembly procedure, the mark on the webbing should be located at the cam buckle.

This setting is a nominal setting for a canoe with a width of 27 to 29 inches. Based on the width and contour of your canoe, this setting may vary. When loading, with the canoe in the water, the handle should be a couple of inches above the outside edge of the canoe.

This setting is for 2 purposes:

- 1 - To accommodate the size and contour of your canoe
- 2 - To allow your canoe to sit at an angle to minimize rain entering the Canoe and therefore collect in the cockpit



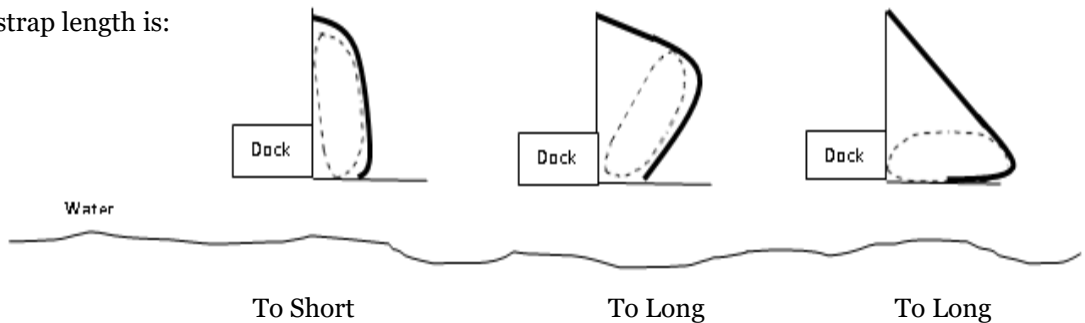
3 - Load your Canoe into your rack and rotate to the Canoe Storage Position by:

- a: Rotating the Cradle toward the water such that the handle is parallel with the water. Do this using the lifting strap.
- b: Floating your Canoe into the rack (between the handle and the webbing) such that the canoe is centered.
- c: Lift your canoe just out of the water. If your canoe wants to lean to the right or left, check the straps to see if there is an excessive amount of strap on the side that's leaning, if so shorten. Also, you may want to adjust the position of the canoe in the rack. If the lean is to the left, reposition the canoe slightly to the right to have the center of gravity positioned between the straps. Reposition the canoe to the left if the lean is to the right. Remember this positioning for normal operation.
- d: Grasp the center of the cradle or use lifting strap and SLOWLY rotate the handle to the storage position. Rotate SLOWLY, to understand the "feel" of the lift when your canoe rotates toward the Dock. Rotate the Latch Plates (both sides) into position to maintain the position of the Canoe.

SETUP of “The DockSider”™ - continued

Webbing Length Adjustment :

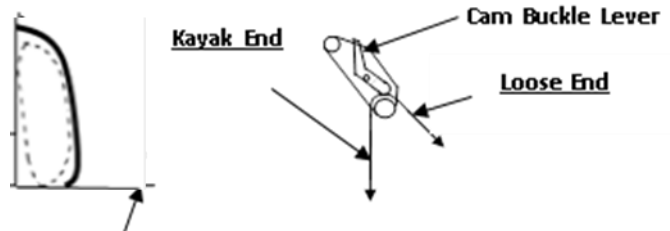
The webbing strap length is:



Note: If the dock surface to water height is between 10 and 15 inches, the figure above on the left maybe the best that can be achieved with the contour of your kayak.

To adjust the Length of the webbing straps:
Depress Cam Buckle lever and pull in the direction shown

The ideal storage position should look like:



Never adjust such that the bottom of your Canoe is closer than 2 inches to the end of the cradle.

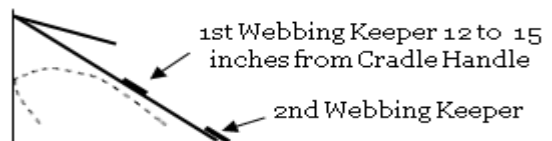
Note: the closer the canoe is to the end of the cradle, the greater the reach of operation.

Suggestion: If the Webbing length is to short, lengthen significantly.

Manually, position your canoe in the storage position at the desired angle, and then tighten straps by shortening.

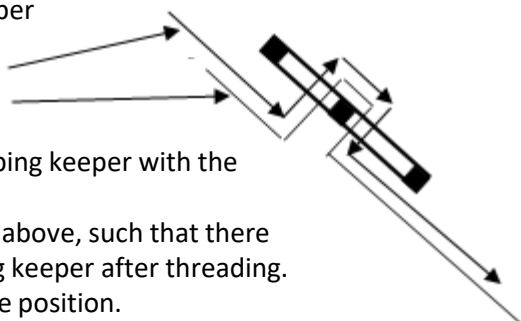
Now that the webbing length is set, Secure Loose end of webbing length as follows:

Position the 1st Webbing Keeper approximately 12 to 15 inches down from the cradle handle; on each web strap.



Thread the loose end of webbing through Webbing Keeper (each side of unit)

Cam Buckle Loose End of Webbing
Cam Buckle Kayak End of Webbing



Note:

It is much easier to thread the webbing through the webbing keeper with the Canoe out of the Canoe Rack.

Reposition the 2nd webbing keeper and thread, similar to above, such that there is 1 to 3 inches of webbing extended beyond the webbing keeper after threading.

Reload your Kayak , and rotate your Canoe into its storage position.

You may place your Paddle in the loop between the handle and the 1st webbing keeper.

The Setup is now Complete.

Operating Instructions

To UNLOAD: Note, if your paddle is stored in your Canoe Rack, remove your paddle first and set aside.

Canoe Operating Models

- 1 - Before unloading, check to Ensure that there are no objects or people in the path of the canoe when rotated toward the water.
- 2 - Standing on the Dock, grasp the pulley rope in one hand and then grasp the center of the handle.
- 3 - Rotate the Latch Plates on both Pivot Laterals 90 degrees counterclockwise. Note: Securely hold the handle as the Latch Plates are rotated out of the way, the weight of the Canoe will cause the Canoe Rack to want to rotate toward the water.
- 4 - Firmly holding the pulley rope, slowly lower the canoe into the water, by releasing (hand over hand) the length of the tether cord until your canoe is in the water.
- 5 - Secure the end of the pulley rope that is left in your hand around the cross bar such that you may float your canoe out of the rack.
- 6 - Float your canoe completely out of the rack and then pull on the pulley rope, to lift the cradle back into the storage position.
- 7 - Rotate the Latch Plates back into its holding position such that the cradle will not rotate back into the water when released.
- 8 - Enter your Canoe ensuring you are clear of the rack, grab your paddle and start your voyage.

To Load and Store:

Canoe Operating Models

- 1 - Exit your canoe assuring you are clear of the canoe rack.
- 2 - Release the Latch Plates and lower the cradle.
- 3 - Secure pulley rope to the cross bar such that your canoe will float into your rack between the handle and the lifting webbing.
- 4 - Float your canoe into the rack and position.
- 5 - Grasp the pulley rope and slowly lift / rotate your canoe and rack into its storage position.
- 6 - Grasp the handle of your rack, holding it in its storage position.
- 7 - Rotate the Latch Plates into position such that your canoe will not rotate back into the water.
- 8 - Release your hand from the cradle handle and coil and secure the pulley rope to the cross bar with the Velcro strap
- 9 - If you choose, store your paddle between the webbing under the cam buckle.

You're DONE - just Load / Latch / and walk away!



WE SINCERELY HOPE YOU ENJOY THE CONVIENIENCE OF
"The Docksider"TM

For assistance, please call: 585 – 734 – 7374
Or send email to: info@DockCraft.com

DockCraft Industries LLC
3694 Nibawauka Beach
Canandaigua, New York 14424
www.DockCraft.com